

Info

Hans Brattrud started designing his famous Scandia Chair Collection in 1957. Later a number of accessories have been added to the series, to heighten the seating experience.



Headrest Scandia Senior

Black



Light Brown



Dark Brown



Cushion Lounge, Easy & Dining Chair

Black



Light Brown



Dark Brown



Sheepskin Overlay Small / Large

Naurl White



Beige



Grey / Black



Dark Brown



Scandia Ottoman

Design Hans Brattrud, 1959

Walnut



Oak



White Pigmented
Oak



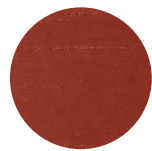
White
NCS S 0300-N



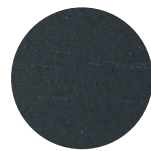
Black
NCS S 9000-1



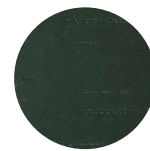
Red
NCS S 4550-Y90R



Blue
NCS S 8010-R90B



Green
NCS S 8010-G10Y



Light Grey
NCS S 2002-B



Fully Coloured

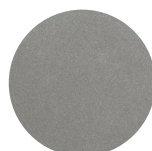


Light Edges



Base Colours

Satin Chrome



Black Coated
RAL 9005

